



**Bexar County  
Infrastructure Services  
Flood Control CIP Program**

**Project: MR27**

## Live Oak Slough -Overflow Control

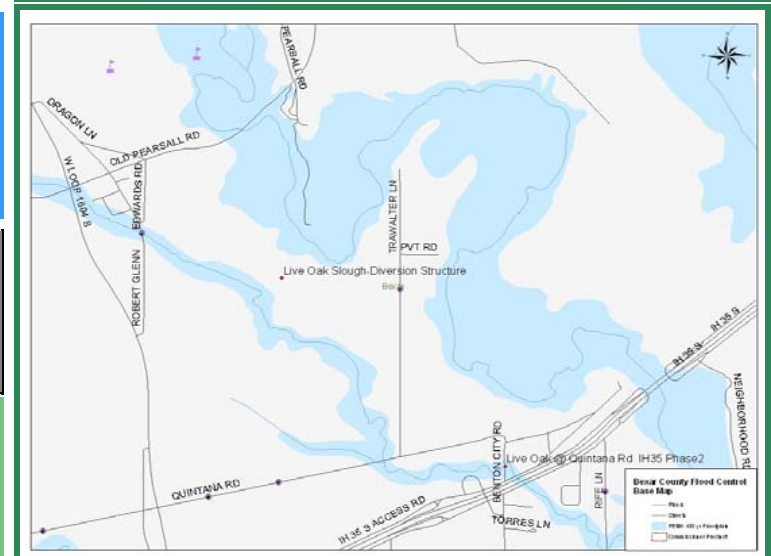
**Location / Limits: Medina River through SAWS property**



### SCOPE :

A Storm Water Diversion project to be constructed to reduce flooding and erosion at the residential properties along Trawalter Lane and Quintana Road by taking outflow directly to the Medina River.

The current drainage situation in Live Oak Slough is flooding of properties caused by overland flow of storm water. The storm water floods across properties to the Medina River.



<b>Precinct:</b>	1	<b>OCL/ICL:</b>	O.C.L.
<b>Watershed:</b>	Medina River		
<b>Creek Name:</b>	Live Oak Slough		
<b>Project Type:</b>	Natural Waterway Conveyance		

<b>Consultant:</b>	URS
<b>Consultant Awarded:</b>	2 /10/2009
<b>Contractor:</b>	TBD
<b>Contractor Awarded:</b>	
<b>Construction Start:</b>	Aug 2012
<b>Construction End:</b>	Jan 2013

<b>Estimated Construction Cost:</b>	\$1,000,000
-------------------------------------	-------------

**PROJECT STATUS**  
*Preliminary Design*